

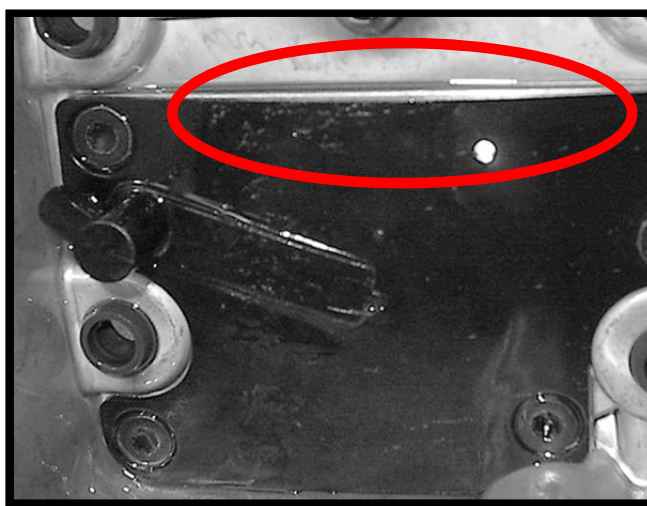
ATV**POLARIS**
The Way Out.

Team Tips

ARTICLE: **A-11-03-01**DATE: **March 03, 2011***Published for Polaris Dealerships, Distributors, and Service Technicians*

2009 - 2011 SPORTSMAN XP 850 – Breather / Labyrinth Cover Fitment

This Team Tip is to inform you that incorrect assembly of the rocker cover breather subassembly may cause the labyrinth plate to bow, as shown below. This condition can cause an incorrect fitment of the plate to the rocker cover and allow oil to carry over into the airbox.



The correct way to install the breather subassembly is to lubricate the bottom O-ring (A) with general purpose grease and twist the breather subassembly back and forth until the breather is properly seated into the labyrinth plate (B), then tighten the (2) breather bolts (C) to specification.

